

Photo by Integrity Stock Shots

# Showing Market Beef Starter Guide.

## Overview:

Preparing for and showing livestock can be an extremely rewarding and educational experience for youth. The lessons learned in showing and raising livestock are invaluable. However, it can feel very intimidating to begin. This guide is a broad overview of how to prepare for showing market beef. All exhibitors are encouraged to ask questions as they grow through the program.

Manuals can be purchased at the SLV Extension Office

Record Books

<https://drive.google.com/file/d/159S3N4U071Y8Ns-olQwPHzt6jSbJzTYU/view>

<https://drive.google.com/file/d/1Ri8hfQFcgbl4OZOwE-H21iFArmdeJPy9/view>

## How to prepare for purchasing your animal:

Before purchasing an animal and bringing it home, it is important to consider the needs of that animal. Firstly, do you have a well fenced area. It is recommended to have at least a 100x100 foot space for one to four steers. This will give ample room for them to exercise. It is also important to consider feeders and waterers. When considering a feeder, remember to make it a goal to eliminate waste and protect your cattle from consuming debris like rocks. For waterers, make sure whatever is used is big enough to hold the water the animal needs in a day and is heavy enough they cannot tip or easily break it.

Your market beef will also need a wind or snow break or some sort of shelter for them to escape the snow, rain, wind, hail, and other weather that frequently impacts San Luis Valley. Cattle will not likely need heat lamps in the winters if they are able to stay dry and protected from the weather. In some instances, producers will move trailers into pens to give a break from wind and blowing snow/rain if they do not have other shelter options

## Purchasing your animal:

The majority of market beef are born in the spring of the year before county fair and are purchased in the month of October if they are being shown at SLV Fair to be Shown in August. Tag-in is February 1. You can buy them slightly earlier or later than that, but it is important to consider what weight they are when you buy them. A few things to consider for this are: average daily gain and the number of days you will have them on feed. Also remember the ownership deadline for County Fair animals is the day of weigh-in. The weight range at SLV Fair is 1,100-1,600 lbs. Average Daily Gain for beef is 2-3 lbs. Below is how to calculate the weight your animal needs to be at time of purchase:

### Calculate # of days on feed:

Fair date to Purchase date= total days on feed

July 24-October 10= 288 days

### Calculate Pounds to be gained:

Total days on feed \* ADG=  
Pounds to be gained

288 days\*2.5 lbs ADG=720lbs

### Find start weight:

Target weight- total pounds to be gained  
= Target starting weight

1,400 lbs-720 lbs= 680 lbs



Photo by Integrity Stock Shots



### **Feeding your animal:**

There are many feeds available for your market beef. You can do your research to determine which you feel most confident about. You can ask your breeder and other livestock exhibitors for advice on what to feed. You will want to consider the breed of your animal when selecting a feed.

#### **Maine, Chianina or, sometimes, Simmental influence**

Protein: 11.5–12.5%

Fat: 3.5–4.5%

Fiber: 8–16%

#### **British Breeds including Angus & Hereford**

Protein: 12.5–13.5%

Fat: 3–4%

Fiber: 10–16%

Putting fat on an animal is harder in the summer months so you might want to put more fat on your animal in the cooler months. To do so, feed a feed that is higher in fat percentage. It takes 4.5-7.5 pounds of feed to achieve one pound of gain. You should try to feed 2% of the animal's body weight daily. This means you will have to weigh your animal periodically to increase feed intake as your animal grows. You will also want to feed 1-3 pounds of hay or alfalfa daily. Cattle rely heavily on forages, like hay, to get essential nutrients and to ensure a healthy rumen environment. Forages keep the pH of the rumen at a normal level. If fed too much grain with not enough forage, cattle will get acidotic and can bloat, potentially leading to death.



### **Halter Breaking:**

Halter breaking is all about patience and practice. Go slow and don't rush the process. You never want to hit your animal. Your goal is to earn the animal's trust and respect. You're building a relationship with your animal and that takes time, plain and simple. Have a gentle, compassionate hand and be willing to devote time to the worthwhile effort of teaching your animal to respect the halter. One way to build this trust is to be regular in your interactions with the animal. Develop a routine and stick with it. Soon the animal will know what to expect from you and will learn to respond accordingly. Don't give up! No two animals are the same and some will be more stubborn than others. Be confident and consistent in your approach.



### **Teaching to Lead**

It shouldn't take much more than a week to teach your show stock to lead. Always stand on the left side of your animal and use gentle pressure to teach your animal to respond by slightly pulling on the halter. Never yank. Once the animal is moving, release the pressure. Start small. Set attainable goals in terms of distance that you can meet and then increase. Don't expect your animal to be led long distances immediately. Allow them the time necessary to become comfortable with your command and guidance before expecting them to perform at show levels.





Photo by Integrity Stock Shots

## Setting up in the show ring

A show stick is a very useful tool when teaching your animal how to present itself. To pose a calf or heifer, the front feet should be squarely aligned beneath the shoulders with the hind leg closest to the judge positioned slightly back. You don't want your animal to be too stretched out. Rather, your animal should be balanced. Once you're in the ring, you may need to reposition its feet as judges perform their inspections. Do it discreetly and gently.

## Supplies for show preparation

- Hoof Trimming: One month before County Fair, you will want to get your animals hooves trimmed. This allows for an even walking surface and allows for more comfort
- Cattle Clippers, large & small clippers with multiple attachments. Small clippers with short attachments help you groom hard-to-reach places like inside ears
- Blade Lubricant, WD-40 works, but the manufacturer will likely have a product designed especially for your clippers
- Livestock Blower, A blow dryer will help the hair to stand up & make clipping easier and will generally help fluff the coat
- Extension Cord, You will need it to power the clippers & any necessary lights you might bring. It doesn't hurt to have a light for clipping to make sure your clipping area is as visible as possible. Make sure your cord is plenty long as you won't know how close you'll be to a power source before you get to the show
- Topline Brush, This stiff brush will help the topline hair stand up for accurate clipping
- Hair Adhesive, You'll want to get some advice in advance of show day about how to use this. Once you know, it will be useful for getting hair to stay in place once it's clipped and brushed. Be warned, it's very sticky and can make a mess if you don't use it with caution



## Common Health Concerns

- Bloat: Bloat is indigestion that shows in the form of excessive gas build up in the rumen. Managing bloat in a pasture setting is hard. You can make an effort to feed dry hay and avoid turning hungry cattle out on pasture so they don't graze too fast. Feedlot bloat can be prevented by making sure 10-15% of the ration fed contains roughage.
- Acidosis: Ruminal Acidosis occurs when the pH of the rumen falls below 5.5 (normal range is 6.5-7.0). In most cases this happens when cattle consume too much of a highly digestible carbohydrate such as barley. Treatment includes feeding long-stem dry hay, free-choice or force-fed baking soda (sodium bicarbonate), and rumen probiotics to repopulate the rumen with "good bugs."
- Ringworm: Ringworm is caused by many types of fungus. It causes circular lesions in the skin and hair loss. Prevent by sanitizing combs, halters and other items frequently and washing animals with Ring Out (or similar product) after shows. Treat with topical creams obtained from a veterinarian



Photo by Integrity Stock Shots



## What will my Project Cost?

Livestock projects can really add up in cost. It is important to ensure that you can afford your project before buying animals. It also is important to consider what you are likely to make from your project to offset the cost. Below is a breakdown:

**Cost of purchasing your animal:** \$2,000-\$5,000

**Cost of feed:**

# of Bags of Feed Needed= (Pounds of Gain Needed\*Feed Conversion Ratio)/50 lbs  
 (576 lbs\*6 lbs)=3,456 lbs of feed 3456/50=69.12 (round up to 70 bags)

70 bags of feed\* \$30.00(National Brand Show Ration)= \$1,960.00/head

**Cost of vet/health:** \$300/head (estimation but should be budgeted into figure)

**Supplies:** \$300/head (Estimation but should be budgeted into figure)

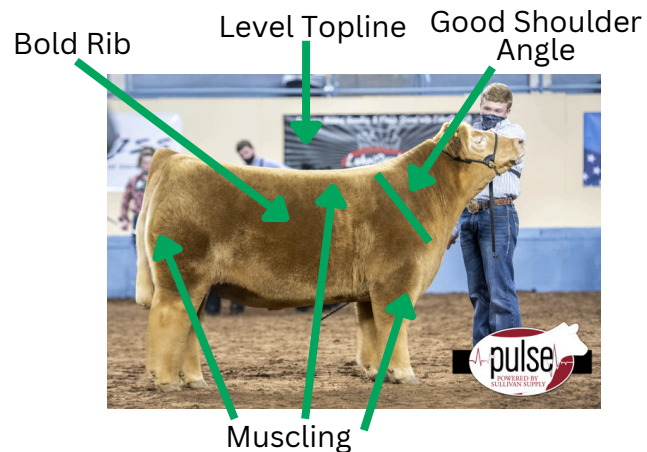
**Total Cost:** \$4,560.00-7,560.00

**Average Sale Price at 2023 Phillips County Fair:** \$4,846.15



## Selecting Market Cattle

You want your beef to be wide constructed with good muscling behind their shoulders, down their spine, and through their leg and forearm. Good cattle will also be able to move unrestricted and have a 45 degree angle at their shoulder. You also want them to 'balance' well. This means that the front 1/3 matches the middle and end 1/3's. Basically, all the pieces fit together.



## Sources and Resources

- <https://agnr.osu.edu/sites/agnr/files/imce/pdfs/Beef/FeedingShowSteer.pdf>
- <https://www.qcsupply.com/blog/product-tips-and-how-tos/beginners-guide-for-showing-cattle.html>
- <https://www.thepigsite.com/articles/keeping-your-livestock-show-animals-healthy>
- [https://www.purinamills.com/show-feed/education/detail/show-cattle-feed-top-tips-from-the-experts?utm\\_source=google&utm\\_medium=cpc&utm\\_campaign=3395736&utm\\_term=&utm\\_content=3395736\\_Purina\\_Show\\_A\\_CM1\\_Google\\_Backyard%20-%20Show\\_Educational%20DSA\\_NB\\_DMT\\_US\\_Prospecting\\_DSASearch\\_D\\_D\\_Traffic\\_3395736%5E&gad\\_source=1&gclid=Cj0KCQiAhc-sBhCEARIsAOVwHuRMGL1EEKfy43DdVd5ZaOJ70Bu4zHQVZ00h0UqQvSGgGC61HwuhlkwaApNmEALw\\_wcB](https://www.purinamills.com/show-feed/education/detail/show-cattle-feed-top-tips-from-the-experts?utm_source=google&utm_medium=cpc&utm_campaign=3395736&utm_term=&utm_content=3395736_Purina_Show_A_CM1_Google_Backyard%20-%20Show_Educational%20DSA_NB_DMT_US_Prospecting_DSASearch_D_D_Traffic_3395736%5E&gad_source=1&gclid=Cj0KCQiAhc-sBhCEARIsAOVwHuRMGL1EEKfy43DdVd5ZaOJ70Bu4zHQVZ00h0UqQvSGgGC61HwuhlkwaApNmEALw_wcB)

Produced by: Jessie Salyards, 4-H Specialist, Phillips County

Colorado State University Extension is an equal opportunity provider. Colorado State University does not discriminate on the basis of disability and is committed to providing reasonable accommodations. CSU's Office of Engagement and Extension ensures meaningful access and equal opportunities to participate to individuals whose first language is not English.

Colorado State University Extension es un proveedor que ofrece igualdad de oportunidades. Colorado State University no discrimina por motivos de discapacidad y se compromete a proporcionar adaptaciones razonables. Office of Engagement and Extension de CSU garantiza acceso significativo e igualdad de oportunidades para participar a las personas quienes su primer idioma no es el inglés. Col.st/ll0t3