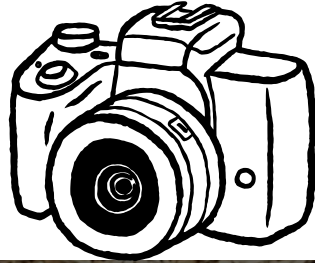


SLV 4-H



Photography Starter Guide.



Overview: <https://co4h.colostate.edu/wp-content/uploads/2021/12/Photography-Project-and-Tip-Sheet.pdf>

This project educates on the basic knowledge of photography. You will complete a display photo that's 5x7 and matted according to Colorado State Fair requirements and record book along with photos completed in manual activities. Need to be displayed on cardstock and labeled.



Requirements:

Manuals can be purchased at <https://shop4-h.org/> or SLV Extension for \$9.95

(Attend 2 project meetings)

Record book in a 3-ring folder will need to accompany your project.

<https://co4h.colostate.edu/projects/erecords/filmmakinge-record.pdf>

Units

- Photography Basics – Unit 1 <https://co4h.colostate.edu/projects/erecords/photographyunit1PBe-record.pdf>
- Photography Basics Cont.- Unit 2 <https://co4h.colostate.edu/projects/erecords/photographyunit2PBe-record.pdf>
- Next Level – Unit 3 <https://co4h.colostate.edu/projects/erecords/photographyunit3e-record.pdf>
- Mastering Photography- Unit 4 (order above from Shop 4-H) <https://co4h.colostate.edu/projects/erecords/photographyunit4e-record.pdf>
- Low Light Photography – Unit 5 <https://co4h.colostate.edu/projects/erecords/photographyunit5e-record.pdf>
- Advanced Photography – Unit 6 (Supplement Guide) <https://co4h.colostate.edu/projects/erecords/photographyunit6e-record.pdf>



Cost of this Project:

Basic camera-\$50-\$100

Develop film-\$5-\$15

Mattes-\$5

<https://co4h.colostate.edu/statefair/StateFairExhibitReq.pdf>

Colorado State University Extension is an equal opportunity provider. Colorado State University does not discriminate on the basis of disability and is committed to providing reasonable accommodations. CSU's Office of Engagement and Extension ensures meaningful access and equal opportunities to participate to individuals whose first language is not English.

Colorado State University Extension es un proveedor que ofrece igualdad de oportunidades. Colorado State University no discrimina por motivos de discapacidad y se compromete a proporcionar adaptaciones razonables. Office of Engagement and Extension de CSU garantiza acceso significativo e igualdad de oportunidades para participar a las personas quienes su primer idioma no es el inglés. Col.st/110t3